

EISHIN MARU NO.28 5,000 DWT Oil Tanker 33



Contents



By Builder



By Ship Type



EISHIN MARU NO.28 5,000 DWT Oil Tanker 33

The 5,000 dwt class Oil Tanker EISHIN MARU NO.28 was built at SHIN KURUSHIMA HASHIHAMA DOCKYARD CO., LTD. and delivered to Japanese Owner. in March 2024.

Features

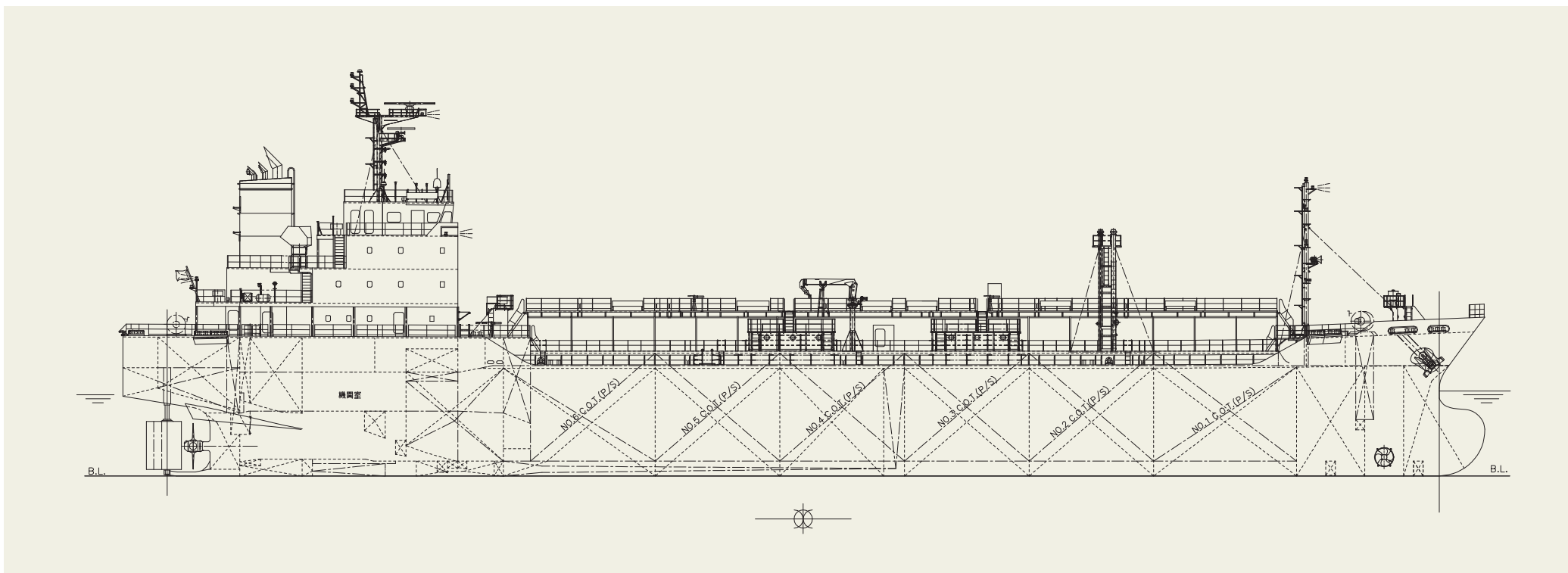
1. The vessel was built for ocean transport of oil products.
2. The vessel has twelve (12) cargo tanks constructed of Pure epoxy paint coating.
3. All cargo tanks are of double-hull structure and have sufficient strength to permit the carriage of a full cargo with a specific gravity of 1.025 t/m³.
4. Structures protruding into the tanks have been minimized

PRINCIPAL PARTICULARS

Length (o.a.).....	104.93 m
Length (b.p.).....	98.00 m
Breadth (mld.).....	16.00 m
Depth (mld.).....	8.30 m
Draft (mld.).....	6.25 m
Gross tonnage.....	3,946
Deadweight.....	5,499 t
Main engine.....	AKASAKA A45S

MCR (kW x rpm).....	3,309 kW x 220 min ⁻¹
NOR (kW x rpm).....	2,813 kW x abt. 208 min ⁻¹
Speed (service).....	14.0 knots
Complement.....	15P
Classification.....	NK
Cargo pump.....	Screw type
	1,300 m ³ /h x 0.83 MPa x 2 sets (500 kW x 900 min ⁻¹)
Loading capacity (tank).....	6,499 m ³
Builder.....	Shin Kurushima Hashihama Dockyard Co., Ltd.

by using an on-deck girder system for the upper deck and vertical corrugated type bulkheads.



CHEMROAD KAIA 35,000 DWT Oil/Chemical Tanker 35



Contents



By Builder



By Ship Type





Contents



By Builder



By Ship Type

CHEMROAD KAIA 35,000 DWT Oil/Chemical Tanker 35

The 35,000 dwt type chemical carrier CHEMROAD KAIA was built at SHIN KURUSHIMA DOCKYARD CO., LTD. and delivered to the Panamanian Owner in August 2025.

Features

1. The vessel was built for ocean transport of chemicals (IMO type II and III) and oil products.
2. The vessel has eighteen (18) cargo tanks (including slop tanks) constructed of SUS316LN stainless steel and SUS316L clad steel.
3. All cargo tanks are of double-hull structure and have sufficient strength to permit the carriage of a full cargo with a specific gravity of 1.30 t/m³.
4. Structures protruding into the tanks have been minimized by using an on-deck girder system for the upper deck and vertical corrugated type bulkheads.

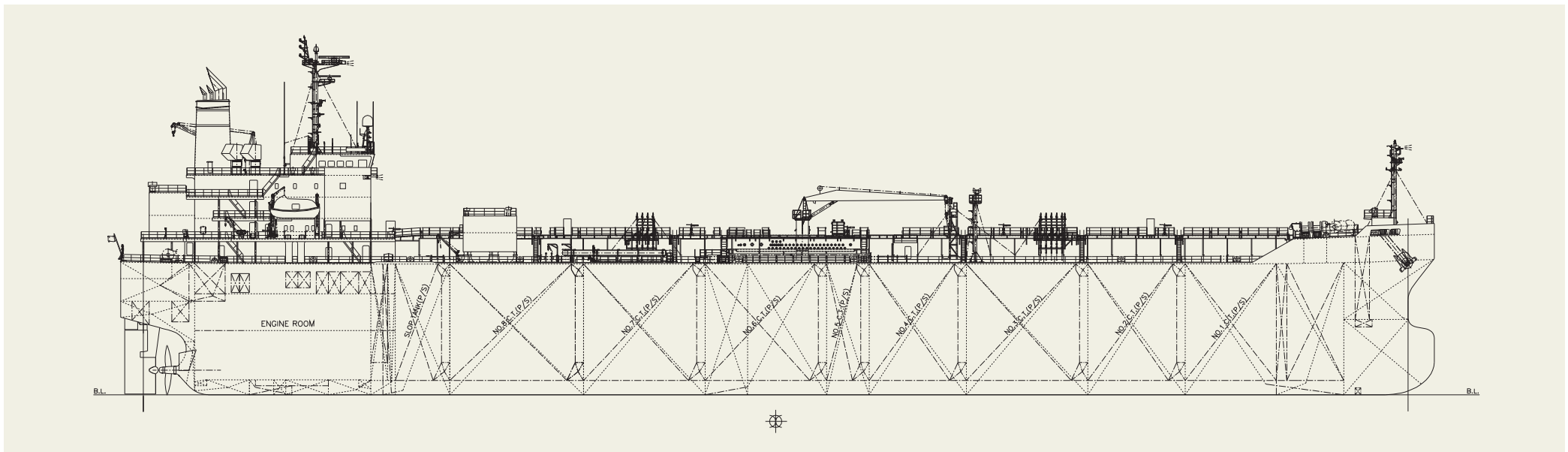
PRINCIPAL PARTICULARS

Length (o.a.)	172.98 m
Length (b.p.)	166.50 m
Breadth (mld.)	28.20 m
Depth (mld.)	17.20 m
Draft (mld.)	11.40 m
Gross tonnage	23,471
Deadweight	35,769 t
Main engine	6UEC50LSH-Eco-C3-EGR
MCR (kW x rpm)	6,600 kW x 89.0 min

NOR (kW x rpm).....	5,610 kW x abt. 84.5 min
Speed (service)	14.5 knots
Complement	30P
Classification.....	NK
Cargo pump.....	Submerged type
	300 m ³ /h x 115 mLC (SG=0.80) x 14 sets
	200 m ³ /h x 115 mLC (SG=0.80) x 4 sets
	70 m ³ /h x 70mLC (SG=1.00) x 1 set (Portable type)
Loading capacity (tank).....	39,827 m ³
Builder.....	Shin Kurushima Dockyard Co., Ltd.

5. Each cargo tank is equipped with one (1) submerged cargo pump driven by a hydraulic motor; these are remotely controlled from the cargo control room.
6. Cargo handling is simplified by a 10 metric-ton

hydraulically operated deck crane for hose handling; it is arranged a midship on the upper deck.



BRAVE CRANE 41,000 DWT Class Open Hatch Bulk Carrier 70



Contents



By Builder



By Ship Type





Contents



By Builder



By Ship Type

BRAVE CRANE 41,000 DWT Class Open Hatch Bulk Carrier 70

The 41,000 dwt class open hatch bulk carrier BRAVE CRANE was built at SHIN KURUSHIMA KOCHIYUKO CO., LTD. and delivered to Panamanian owner in February 2025.

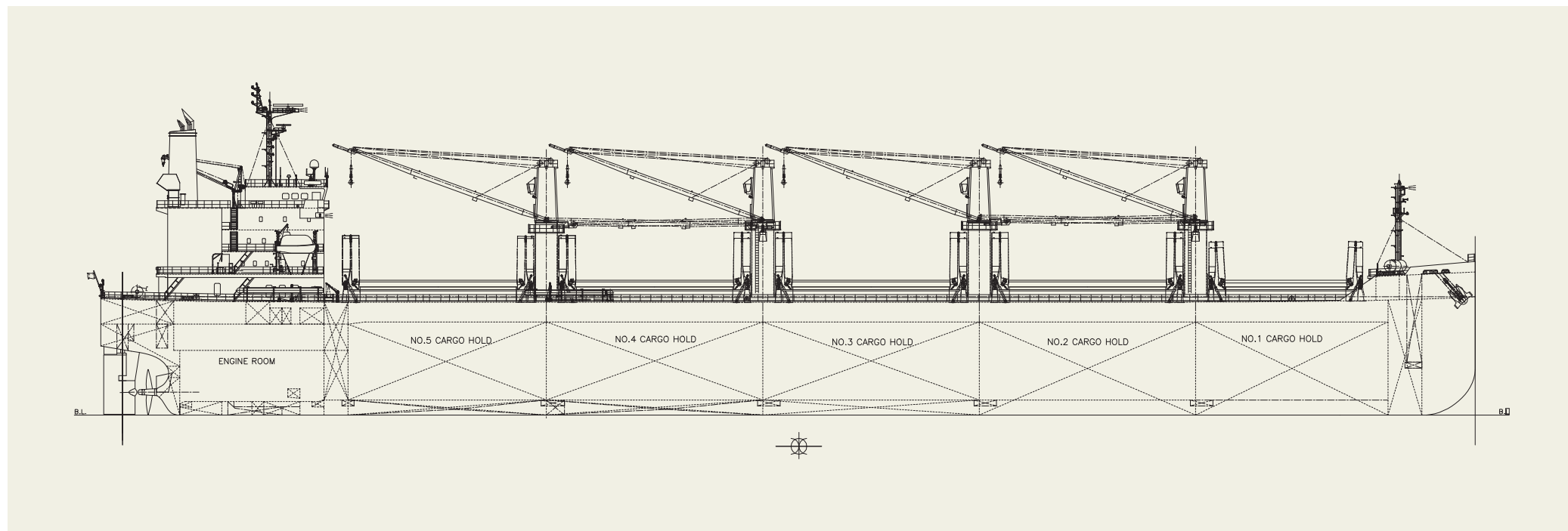
Features

1. The vessel has double hull construction for all five (5) cargo holds. No.2, No.3 and No.4 cargo holds are fully box shape construction.
2. Wide size hatches and box shape holds are highly efficient for steel coils and other cargoes loading.
3. The hatch covers are wide folding type and operated by hydraulic cylinders.

PRINCIPAL PARTICULARS

Length (o.a.).....	182.92 m	MCR (kw x min ⁻¹).....	5,700 kW x 105 min ⁻¹
Length (b.p.).....	180.00 m	NOR (kw x min ⁻¹).....	4,845 kW x abt 99.5 min ⁻¹
Breadth (mld.).....	32.20 m	Speed (service).....	14.0 knots
Depth (mld.).....	15.03 m	Complement.....	25P
Draft (mld.).....	9.20 m	Classification.....	NK
Gross tonnage.....	25,837	Loading capacity (grain).....	49,359 m ³
Deadweight.....	41,445 t	(bale).....	48,139 m ³
Main engine.....	MAKITA-MITSUI-MAN B&W 6S46ME-B8.5-HPSCR	Builder.....	Shin Kurushima Kochiyuko Co., Ltd.

4. The vessel has four (4) sets of 30ton electro-hydraulic single deck cranes.



ARIETTA 13,465 DWT General Cargo Ship 88



Contents



By Builder



By Ship Type





Contents



By Builder



By Ship Type

ARIETTA 13,465 DWT General Cargo Ship 88

The 13,465 dwt type general cargo ship ARIETTA was built at SHIN KURUSHIMA HIROSHIMA DOCKYARD CO., LTD. and delivered to a Panamanian Owner in July 2024.

Features

1. The vessel has twin-deck cargo holds and the cargo holds are designed as suitable for carrying long-size cargoes.
2. Upper deck hatch covers are single pull type for No.1 hatch and No.2 hatch. Second deck hatch covers are pontoon type.
3. The vessel has 1 set of 72-ton electro-hydraulic twin deck cranes on the upper deck.
4. The ship can carry coal, grain(overstowing), chip, steel coil,

PRINCIPAL PARTICULARS

Length (o.a.).....	119.93 m	MCR (kW x min ⁻¹)	3,030 kW x 147 min ⁻¹
Length (b.p.).....	114.00 m	NOR (kW x min ⁻¹).....	2,576 kW x about 139 min ⁻¹
Breadth (mld.).....	21.20 m	Speed (service).....	12.0 knots
Depth (mld.).....	14.05 m	Complement.....	21 P
Draft (mld.).....	9.00 m	Classification.....	NK
Gross tonnage.....	9,943	Loading capacity (grain).....	19,550 m ³
Deadweight.....	13,465 t	(bale).....	18,848 m ³
Main engine.....	MAKITA - MITSUI - MAN B&W 6S35MC7.1	Builder.....	Shin Kurushima Hiroshima Dockyard Co., Ltd.

steel products, dangerous cargoes and general cargoes.

